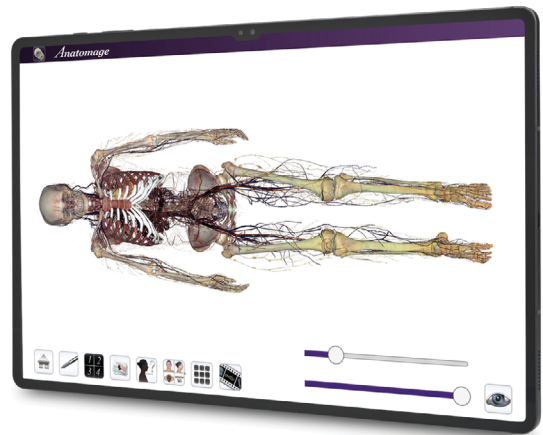


Anatomage™ TABLET



Portable

The 14" inch tablet offers accessible, accurate anatomy resources that help aid student learning, whether in class or after school.

Easy to Use

Intuitive interface is designed for students to easily search and identify any anatomical structures with just a few taps.

Cost-efficient

An affordable route to access real human anatomy and clinical resources authenticated, approved, and utilized by experts.

Real anatomy at your fingertips



Anatomage Tablet inspires students to stay connected with learning wherever they go. Built to make knowledge accessible, Anatomage Tablet provides instant access to digital cadavers, anatomy videos and pathology references for classroom, homework, and autonomous studies. Designed for accredited high school Life Science programs, Anatomage Tablet is a versatile learning device to be implemented into various activities, including structure finding, lab, quick visual guides, and notetaking.

Not your regular tablet



Students uncover what lies inside a human body, from the skin to muscles to skeletal systems with the Anatomage Tablet.



Accurate anatomy content

- ✓ Includes two digital models featuring real male and female anatomy
- ✓ Interactive anatomy content retains the original state in color, size, and texture of the living bodies



Pathology conceptualization

- ✓ Introduces students to pathology concepts through 3D visualization
- ✓ Different volume rendering filters equipped for adjusting anatomical density



2,600+ annotated structures

- ✓ Students can quickly search and identify any anatomical structures of 11 human body systems
- ✓ Structures can be isolated, removed, and manipulated for a better view



Accessible medical resources

- ✓ Provides a virtual portal for students to access clinically-relevant resources
- ✓ Shareable resources include premade anatomical models, quiz content, and curriculum activities created by medical educators

At a glance

Purpose

- Offers a quick access to 3D anatomy and visual guides that supplement student learning in class and after school
- Simplifies difficult learning concepts by incorporating the Tablet's accurate anatomy visual resources into lectures, lab sessions, and assignments
- Supplements Anatomage Table's learning experience by enabling remote access to Anatomage Bodies and learning materials developed by Anatomage users
- Optimizes blended learning approach with digital homework and after school activities, improving students' resourcefulness and IT literacy

Applications

- Blended Learning
- Textbook Supplement
- Lecture Aid
- Autonomous Learning
- Homework Resources

Content

- Gross anatomy: 1 male, 1 female cadaver
- Regional anatomy: 71 unique anatomy shows
- Segmentation: 2,600+ structures in male and female cadavers
- Case library: 300+ real patient CT/ MRI scans of normal anatomy, pathology and unique diseases
- Presets: 536 curriculum-focused presets on the 11 major body systems

Instructional Tools

- Visibility preferences for systems and structures
- Annotation and notes tools
- Self-assessment and quiz tools
- Access to Anatomage Share

Hardware

- High-definition 14" tablet, multi-touch screen
- WiFi, Bluetooth, USB
Connect to the internet and PC computers.
- Dimensions: 12.85" x 8.21" x 0.22" (LxWxH)

Anatomage Share

Anatomage Share is a free account that allows users to share and store files to enhance their usage of Anatomage products. With Anatomage Share, students, instructors, and medical professionals can exchange lesson plans, quizzes, learning materials, and vpf files with other users on the platform.

Compare the difference

Traditional Classroom	Anatomage Tablet
Plastic models and reference books	Accurate 3D visualization of natural anatomy
Limited to classroom lessons only	Access to digital cadavers anytime, anywhere
Difficult to teach pathology	Hands-on interaction with pathological findings
Limited clinical exposure	Clinical resources authenticated by medical professionals

Contact us:

To learn more about Anatomage Tablet or to schedule a demo, visit [anatomage.com](https://www.anatomage.com)